

BUFFALO OF TODAY

ANNO MCMIX DOM!



DOMESTIC AND INDUSTRIAL

<http://stores.ebay.com/Ancestry-Found>

C. E. BURK,
Compiler.

Third Edition.



THE MCKINLEY MONUMENT

THE
MATTHEWS NORTHROP
WORKS
BUFFALO AND NEW YORK



BUFFALO TO-DAY

INDUSTRIAL AND COMMERCIAL

THE 36TH ANNUAL
NATIONAL CONFERENCE OF CHARITIES
AND CORRECTION
WILL BE HELD AT BUFFALO, N. Y.
JUNE 9-16, 1909

FOR FULL INFORMATION
REGARDING THE CONFERENCE, WRITE TO SECRETARY
LOCAL COMMITTEE, 211 ELLICOTT SQUARE
BUFFALO, N. Y.

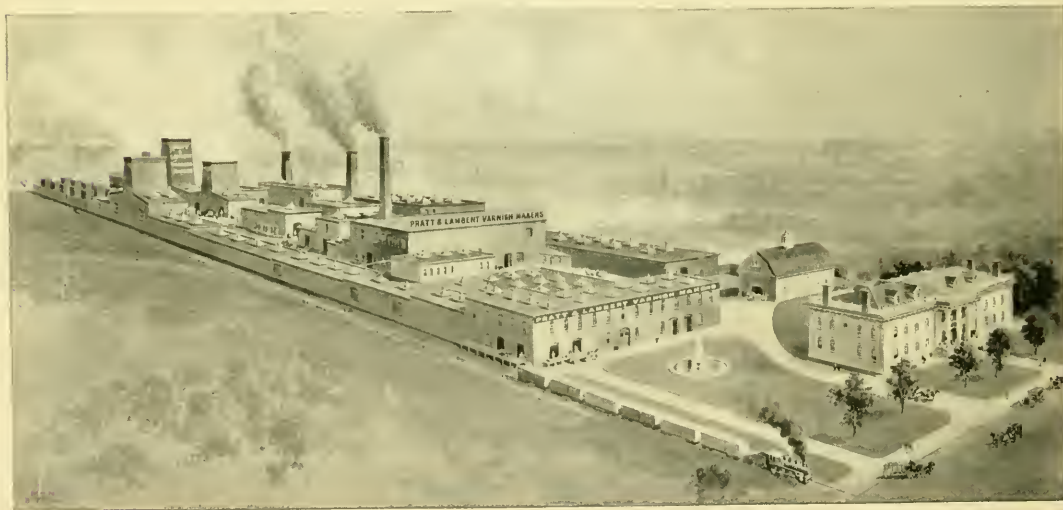
PUBLISHED UNDER THE AUSPICES OF THE PUBLICITY COMMITTEE
NATIONAL CONFERENCE OF CHARITIES AND CORRECTION

F129
B8 N27



THE FACTORY TO FAMILY WORKS OF THE LARKIN CO. OVER FORTY
THOUSAND VISITORS ANNUALLY.

The world's largest manufactory of Soaps, Perfumes, Toilet Preparations, and important Pure Food Specialties.
The entire Product of the Larkin Factories is sold direct to consumers.

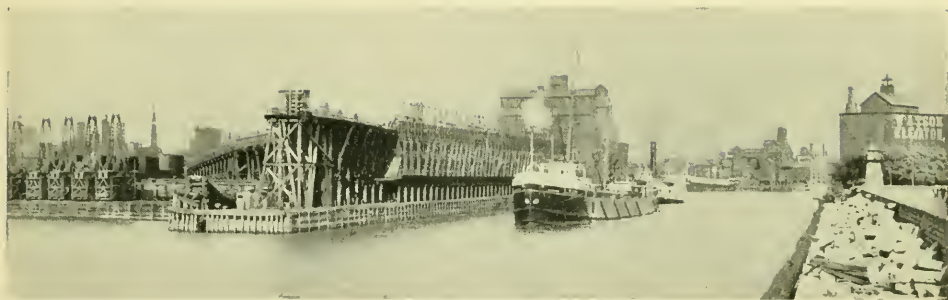


BUFFALO FACTORY OF PRATT & LAMBERT, VARNISH MAKERS.

Other factories: New York, Chicago, London, Paris, Hamburg.

By transfer 4

MAR 15 1916



Compiler's Preface.

HARBOR VIEW.

THIS is the third edition of "Buffalo of To-day." It is a special edition, issued under the auspices of the local publicity committee for The National Conference of Charities and Correction, which holds its large annual meeting in Buffalo, 1909. The object is to acquaint prospective visitors and others with the commercial and domestic attractions of Buffalo, and the immense future possibilities for the city. Mention is made of a few large plants which have recently located here, and also the old Buffalo plants, which, owing to increase in business, have required large additional buildings; all of which show the solid, rapid growth of Buffalo. A perusal of the illustrations will show her splendid hotels, stores, and public buildings, as well as her broad residence avenues and parks.

The Otis Elevator Company, occupying thirty-five acres of ground, employs upwards of 5,000 men. The New York State Steel Co., which, when completed, will occupy sixty acres, cost in the neighborhood of \$5,000,000. The American plant of the L. M. Ericsson Telephone Manufacturing Co. The Wickwire Steel Co., with its two large blast-furnaces, and accompanying power and ore-handling equipment. The new Geo. N. Pierce Company (automobiles), occupying fifteen acres. A one-third addition to the now large plant of the E. R. Thomas Motor Co.; a similar addition to the Pratt & Letchworth Company. Additions to the Republic Metalware Co., Farrar and Trefts, the Coöperative Stove Company, the Cutler Desk Co., the Wood and Brooks Company, the Clawson and Wilson Company, the Chase and Baker Company, the F. N. Burt factories, the Cahoon-Lyon Drug Company. Two twelve-story office buildings, the Chamber of Commerce, and White Building. The fourteen-story Hotel Statler. The Bickford and Francis Company's building, the large warehouse of Weed & Company. The Shea Theater. The T. and E. Dickinson & Company's building, and many others which space forbids mentioning. The employment of such a largely increased amount of labor as is consequent upon these plants necessarily calls for a proportionate increase in the number of homes, stores, and other factories.

WHY is this book published?

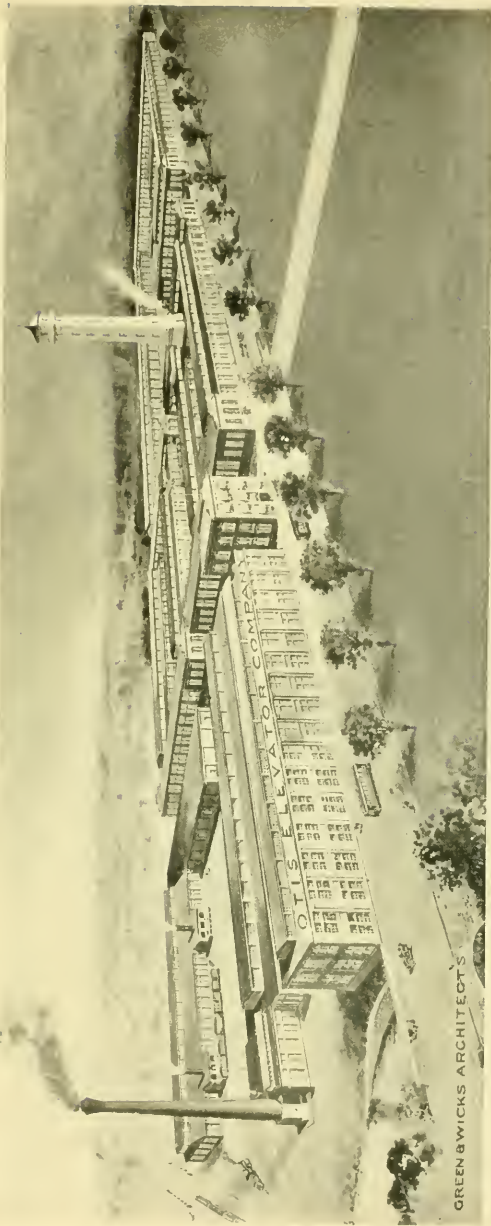
Merely to illustrate a portion of the industrial progress of Buffalo towards her inevitable destiny in the manufacturing world. Three immense, irresistible agencies are constantly operating to make this city the center of the greatest producing zone of the United States. Daniel Webster saw this in 1844, when, in a speech at Rochester, he said:

"If the Thames had a fall of 250 feet within the limits of London, London would not be a town, it would be the whole world."

The editor of the *New York Times* saw this when he wrote:

"Buffalo must inevitably become the greatest milling and manufacturing city on earth."

The Hon. Albert T. Shaw, when Consul to England, speaking of the English people, wrote to the United States Government in his report:



BUFFALO WORKS OF THE OTIS ELEVATOR COMPANY (Now Building).
Most of the Prominent Buildings in Buffalo are provided with Otis Elevators.



THE REPUBLIC METALWARE COMPANY (Republic Street Plant).
Buffalo New York Chicago
Manufacturers of Sheet Metal Goods,
Successors to Sidney Shepard & Co.
Enameled Ware, Etc.



SCENE IN BUFFALO HARBOR.

"They [the English manufacturing experts] are of the opinion, as everybody else is who has made a study of the matter, that the great manufacturing city of the future is to be located on the banks of the Niagara River."

George Westinghouse, who is now considering the building of an immense plant on the banks of the Niagara, as far back as December 22, 1894, predicted the development which is now in evidence, and, on the occasion of his recent visit to Buffalo, he said :

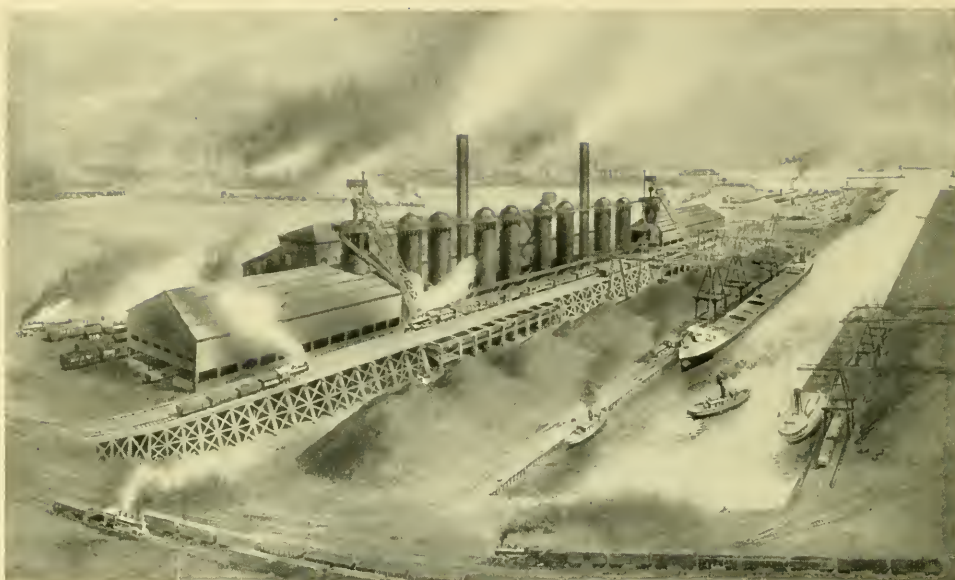
"Your locality possesses all the advantages of transportation facilities, and is most advantageously located as an assembling and distributing point for the whole country. From what I know of electricity and of its possibilities when generated by water power I expect to see a city extend along the entire Niagara Frontier which will astonish the world."

Apart from human energy and local enterprise, what are the three great agencies which are constantly advancing Buffalo as a manufacturing center?

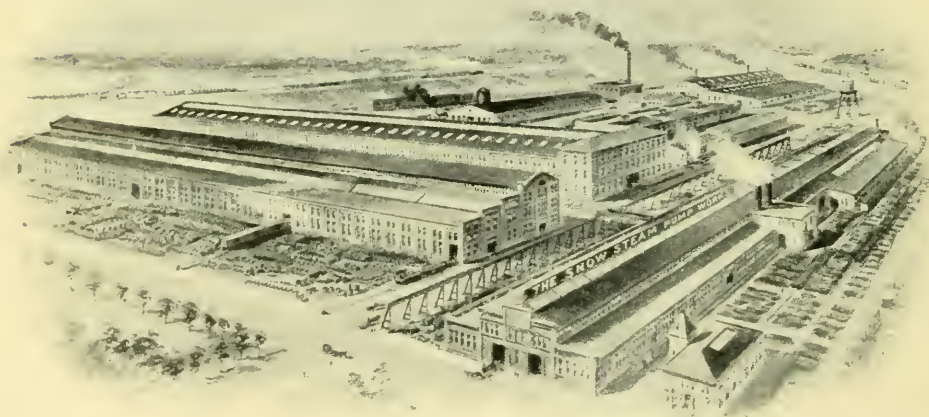
- (1.) Natural convenience of location.
- (2.) Unsurpassed transportation facilities by rail, canal, and lake for the assembling of raw material and the distribution of manufactured products.
- (3.) Unlimited hydraulic-electric power.



OFFICE BUILDING OF THE BELL TELEPHONE CO., OF BUFFALO.



BUFFALO & SUSQUEHANNA IRON COMPANY.
Manufacturers of Susquehanna Pig Iron.



PLANT OF THE SNOW STEAM PUMP WORKS AND THE HOLLY MANUFACTURING CO.
Manufacturers of Pumping Machinery for all services, and of Gas Engines from 100 H. P. to 5,000 H. P. each.



ELEVATOR OF THE SPENCER KELLOGG COMPANY.
Manufacturers and Refiners of Linseed Oil. Daily capacity, 1,200 barrels.

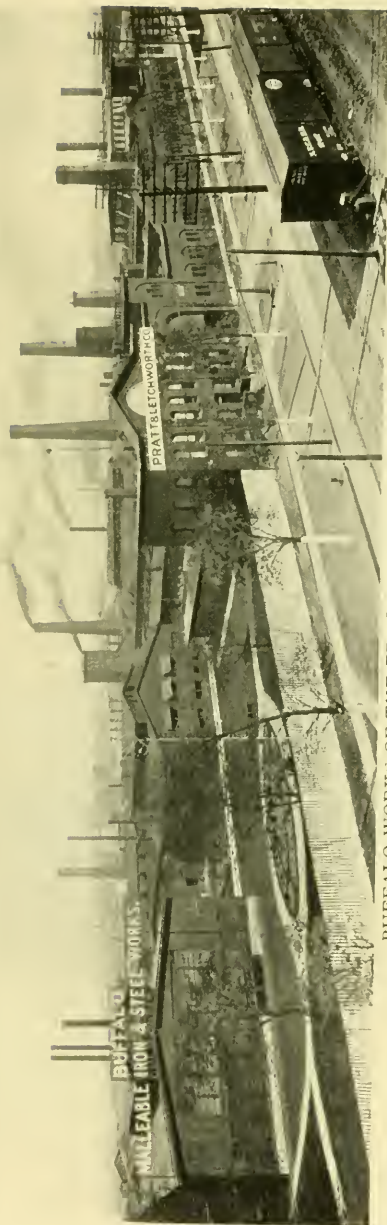
What have these powers accomplished for Buffalo?

Since 1890 they have brought 412 new manufacturing enterprises to Buffalo. Of this number 305 are concerns attracted here by the superior advantages of location. The remainder were financed entirely by home capital or were old home enterprises enlarged and expanded. Included in the newly-located concerns is the plant of the Lackawanna Iron & Steel Company, capitalized at \$60,000,000, now employing 6,000 men, and undergoing constant enlargement. When completed 12,000 men will be employed in these works alone. Adjoining this is the plant of the Buffalo & Susquehanna Iron Company, yet incomplete, employing 1,000 men. When finished it will require 3,000 men to operate these furnaces. The Snow Steam Pump Company has added more than 1,000 men to its pay-rolls during the past two years. The numerous, immense iron-producing and iron-work-



Green & Wicks, Architects.

MARINE NATIONAL BANK.
Capital, Surplus, and Profits, \$2,839,578.41.
Deposits, \$20,925,151.62.



BUFFALO WORKS OF THE PRATT & LETCHWORTH COMPANY.
Producers of Malleable Iron and Steel Castings for railroad and locomotive works.



PLANT OF WOOD & BROOKS COMPANY.
Manufacturers of Piano Ivory, Piano Keys, and Piano Actions.



MAIN STREET FROM
SHELTON SQUARE

ing plants which extend along the navigable waters of Buffalo have, in almost every instance, doubled and trebled their pay-rolls since 1900.

What is the direct cause for the tremendous expansion in the iron and steel industry in Buffalo and the reason for its rapid strides towards supremacy in these lines when it was always believed that the Pittsburg district would maintain its lead in these departments?

Mr. Elisha Walker, the great international expert in iron and steel manufacture, was asked this



FRONTIER TELEPHONE BUILDING.
Containing General Offices of Federal Telephone and
Telegraph Co.



BUFFALO PITTS COMPANY.
Manufacturers of Traction Engines and Threshing Machines.



ADAM, MELDRUM & ANDERSON COMPANY.
Department Store.



LAFAYETTE SQUARE AND BRISBANE BLDG.
Containing S. H. Knox & Co.'s Store.

same question by Wall Street, generally, Fisk & Robinson, brokers, in particular. After a year's investigation Mr. Walker definitely concluded that Buffalo has distinct advantages as an iron manufacturing center.



Green & Wicks, Architects.

**MANUFACTURERS AND TRADERS
NATIONAL BANK.**

(Organized 1856.)
Capital, \$1,000,000.00.
Surplus, \$1,000,000.00.



THE PEOPLES BANK OF BUFFALO.

Capital, Surplus, and Undivided Profits, \$575,000.00.
Deposits, \$4,500,000.00.



THIRD NATIONAL BANK.

Capital, \$500,000.00.

Surplus and Profits, \$130,000.00.



Green & Wicks, Architects.

THE FIDELITY TRUST CO.'S BUILDING.

Capital and Surplus, \$445,500.00.
Assets over \$8,740,000.00.



THE BUFFALO UNION FURNACE COMPANY.

Manufacturers of Coke and Charcoal Pig-iron.



THE CITY HALL.

& Buffalo; Buffalo, Rochester & Pittsburgh; Wabash; Rome, Watertown & Ogdensburg; West Shore; Pere Marquette, and all their various branches, providing 253 passenger trains a day and furnishing 663 miles of railway trackage within the city limits. Thirteen lines of steamships ply the lakes from Buffalo. Buffalo's proximity to the great coal fields provides her with fuel coal for \$1.60 to \$2.60 per ton. Natural gas for manufacturing purposes is retailed

Besides the lake and canal transportation and the unlimited hydraulic-electric power from Niagara what other inducements are offered to manufacturers by Buffalo?

Fifteen great trunk lines of railway center at Buffalo—including the New York Central; the Erie; Lehigh Valley; Delaware, Lackawanna & Western; Pennsylvania; Lake Shore & Michigan Southern; New York, Chicago & St. Louis; Grand Trunk; Canadian Pacific; Michigan Central; Toronto, Hamilton



BUFFALO PUBLIC LIBRARY AND SOLDIERS' MONUMENT.



BANK OF BUFFALO.



ERIE COUNTY SAVINGS BANK.

Amount due Depositors, \$41,645,273.82.
Surplus, \$3,789,306.14.

COMMONWEALTH TRUST COMPANY.

Capital and Surplus, \$1,000,000.00.
Total Resources, \$7,470,000.00.

at $27\frac{1}{2}$ cents per thousand cubic feet. The City of Buffalo enjoys a pure and absolutely unlimited supply of water from Lake Erie, which is delivered to manufacturers at two cents per thousand gallons, the cheapest water in the world. The per capita consumption in 1904 being 333 gallons.

In regard to power?



Green & Wicks, Architects.

CHAMBER OF COMMERCE BUILDING.

Containing the Columbia National Bank of Buffalo.
Capital, \$700,000.00.
Resources, \$8,869,000.00.



WM. H. WALKER & CO.

Wholesale Boots, Shoes and Rubbers.

The present Erie Canal has a depth of from seven to nine feet and a width on the bottom of fifty-two and a half feet. The specifications for the new canal will provide a uniform depth of twelve feet, with a minimum bottom of seventy-five feet, making the new canal capable of carrying boats 150 feet long, twenty-five feet beam, with a draft of ten feet. The present capacity of an Erie Canal boat is 240 tons. The capacity of the boats on the

Buffalo being one of the most cosmopolitan cities in the United States, it abounds in diversified classes. Living is most economical on account of the city's proximity to the great gardens of Western New York, and from its population of 400,000 Buffalo can furnish skilled or unskilled labor in any quantity at most reasonable prices.

THE NEW ERIE CANAL.

The stupendous task of digging the new Erie Canal for which the people of the State of New York voted \$101,000,000, which will connect Buffalo with tidewater by a 1,000 ton barge waterway, is now in hand. This new canal will cost more than the great Suez Canal, while its tonnage will annually exceed that of Suez. It is a greater public improvement for the State of New York to carry out than is the building of the Panama Canal for the United States Government.



17 THE WM. HENGERER COMPANY.

Department Store.



CLAWSON & WILSON COMPANY.
Wholesale Dry Goods.

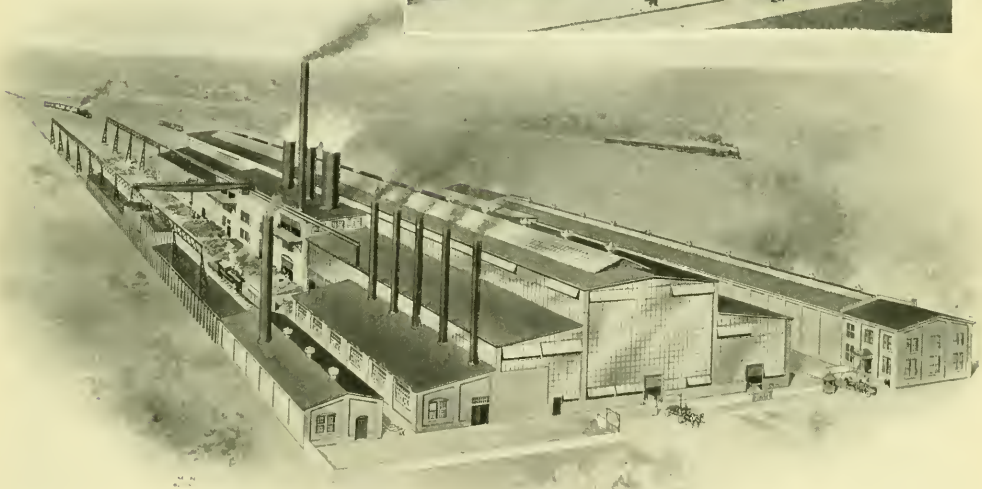


J. N. ADAM & COMPANY.
Department Store.

Green & Wicks, Architects.

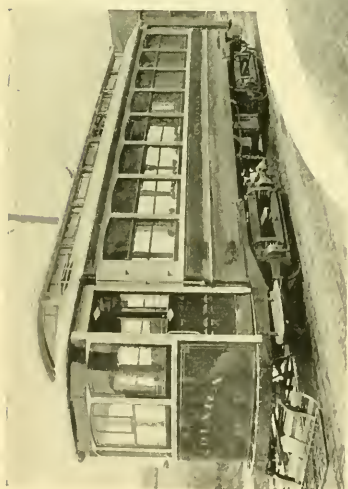
new canal will be 1,000 tons, four times that of the present boats. It costs now three and a half cents a bushel to send grain from Buffalo to New York. The new canal will take two and a half cents off this charge, making the rate one cent per bushel. Whether this means a higher price to Western farmers or a lower price to Eastern consumers is a matter for argument. One thing is certain, it will hold railway rates at such an equipoise that there will never be exactions and the commercial supremacy of Buffalo will be forever maintained. Freight of all descriptions, manufactured products, iron and steel, can be transported from Buffalo to tidewater for a half of a

H. A. MELDRUM CO.
Department Store.



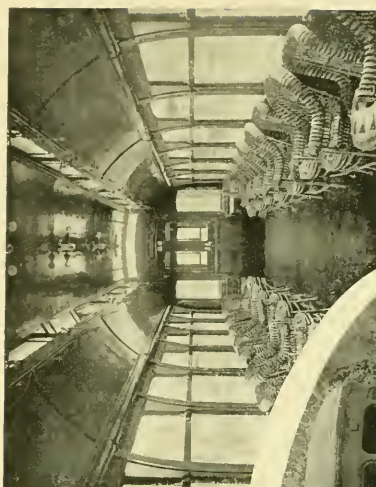
PLANT OF THE BUFFALO FOUNDRY AND MACHINE COMPANY.

The largest manufacturers of heavy castings in the United States.



ONDIARA

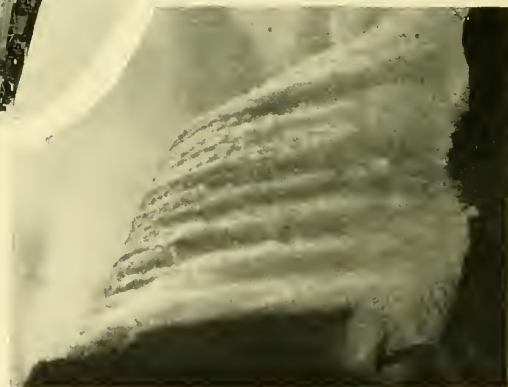
THE INTERNATIONAL
RAILWAY LINES.
Buffalo, Niagara Falls,
Olcott Beach, Lockport.



ONDIARA INTERIOR



THREE-CAR TRAIN



NIAGARA FALLS



LEWISTON



OLCOTT BEACH PARK



Esenwein & Johnson, Architects.

THE IROQUOIS HOTEL.

New York and locate along the Niagara Frontier. This industrial migration has already begun. It will continue naturally, ceaselessly. The ore will meet the coke at Buffalo. The manufactured product will be floated down the Erie Canal instead of being hauled across the Alleghanies. This is inevitable.

What has inquiry proved regarding Buffalo as an advantageous location for manufacturing enterprises?

Skilled engineers and experts in manufacture have scanned continents to find locations where raw material could be bought at the lowest possible cost. When the capitalists embarked upon the enterprise

mill per ton per mile. In other words, on the new canal all kinds of freight can be shipped from Buffalo to New York, 446 miles, at twenty-six cents per ton. The present cost is eighty-seven cents per ton. The new canal will reduce all rates more than two-thirds. The new canal will carry manufactured iron and steel from Buffalo to New York and points along the Atlantic Coast, without breaking bulk, for twenty-six cents a ton. Buffalo can now produce iron and steel sixty-five cents a ton less than Pittsburg. Buffalo now has an advantage over Pittsburg in the cost of ore, limestone, and several other matters incident to the manufacture of iron and steel. Pittsburg's sole remaining advantage being its proximity to coking coal. This will be utterly obliterated. The vast steel and allied industries centering at Pittsburg, which support a population greater than that of Chicago, will, of their own volition, move within the boundaries of the State of



THE LAFAYETTE HOTEL.



THE LENOX HOTEL.

steam pumps the same conditions were experienced. At the time the great steam pump plants were merged it was found that production at Buffalo was so economical that it warranted the closing of the other plants and the concentration of the entire works at Buffalo. Thereupon the Holly Pump Works at Lockport, employing 2,000 men, were moved bodily to Buffalo and linked with the Snow Steam Pump Company's plant here.

When the Swedish electrical manufacturers, who maintain large plants at St. Petersburg, Stockholm, and Nottingham, decided to build a great factory in America, Engineer Weman was sent to this

of building the greatest, most complete individual iron and steel plant in the world commissioners were sent broadcast to find the most advantageous location. Their scrutiny was rigid and complete in the North, South, East, and West. In the face of tempting bonuses, exemptions, special privileges, and many other alluring inducements the expert commission reported that Buffalo was the best location in the world for the manufacture of iron and steel. That at this point the raw material could be most economically assembled; the manufacturing process conducted at the least cost; and the final product distributed in

the most convenient and inexpensive manner. Upon this report, confirmed and proven, the Lackawanna Steel Plant, representing an investment of \$60,000,000, was built at Buffalo. The same investigation with the same results marked the location of the great H-O mills at Buffalo. In the manufacture of



THE MARKEEN.

country to ascertain the most advantageous location. As the cost of the buildings required a vast outlay of money and the employment of an army of men, no time nor expense were spared in this investigation. As in previous cases, the enterprise was coaxed by bonuses, exemptions, free water, and all kinds of special privileges. Buffalo had no fund to offer inducements of this character; but she had inducements of a more practical nature. After three years' investigation Engineer Weman reported that Buffalo was the best place for the location of a factory in all respects. Thereupon the L. M. Ericsson Telephone Manufacturing Company is building at Buffalo the nucleus of its great American plant. Building No. 1 is now completed. The plant will include four buildings with a



Esenwein & Johnson, Architects.

HOTEL STATLER.

separate hall devoted to lavatories and wardrobes, mostly in marble.

These instances could be multiplied indefinitely by examples.

BUFFALO AS A HOME, CONVENTION, AND SIGHT-SEEING CITY.

Buffalo has long been famed as one of the handsomest cities in the world. Her avenues, lined by magnificent residences, shaded by majestic elms, and paved with asphalt are at once the admiration and the wonder of all visitors. This city enjoys 357 miles of asphalt pavement, more smooth



THE GENESEE.



View from the La



Office Building.



Interior of Power House.



One of the four Converters

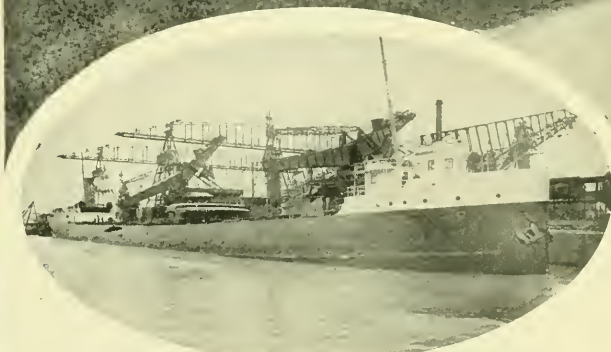
PLANT OF THE LACKAWANNA
Manufacturers of Steel Products. This is one of the largest
and covering a



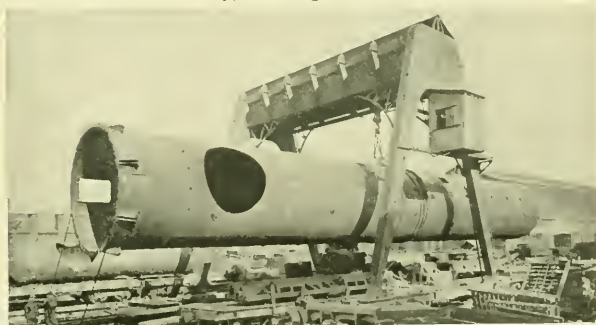
water frontage.



Bessemer department.



Unloading Machinery, removing ore direct from a lake vessel.



Gantry Crane lifting a forty-ton stack.

A STEEL COMPANY.

al steel plants in the world, having a capital of \$60,000,000,
1,100 acres.



Green & Wicks, Architects.

THE MUTUAL LIFE BUILDING.

Buffalo Agency, Mutual Life Insurance Company of New York.

tinguished visitor from abroad would think of missing the Seventh Wonder of the World, or an inspection of the great Gorge where the history of the world, from the time it "was without form and void," is written. Not only is the record of the ages set down for the geologists in the Gorge of the Niagara but the history of three great nations is written in this wonderful neighborhood. From Fort

pavement than Paris, Washington, or any other city in the world. It is also the greatest "home city" in the world. The Island of Manhattan is owned by 42,000 individuals and corporations. Out of a population of 400,000 people in Buffalo the home-owning population is only 30,000 below the total registered vote at the last presidential election. Buffalo's ideal climate, her proximity to the Cataract of Niagara and the wonderful Gorge, makes her the greatest sight-seeing city in the country. No dis-



ELLICOTT SQUARE BUILDING.

One of the largest office buildings in the world, covering a floor space of 4,730,700 feet.



Green & Wicks, Architects.
THE NIAGARA HOTEL.

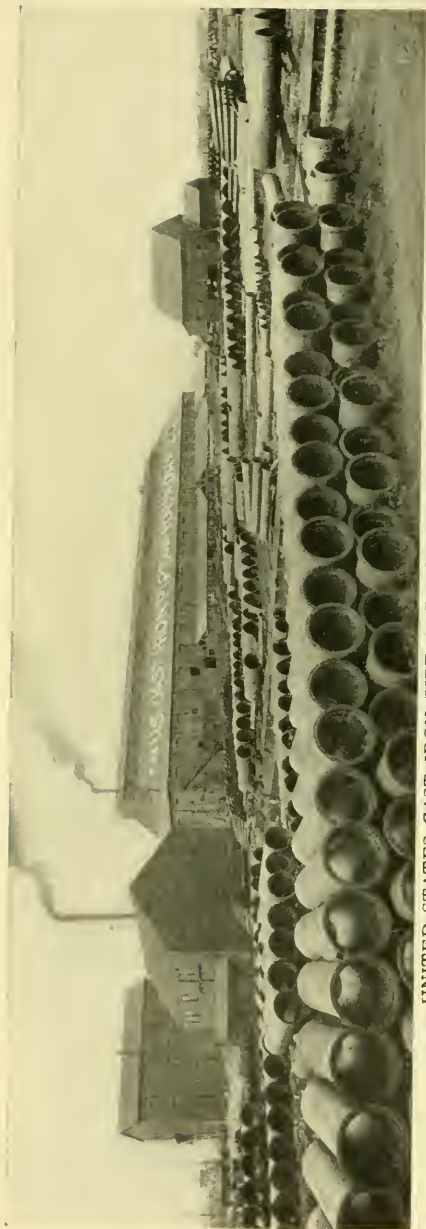
Erie, at the foot of Lake Erie, to Fort Niagara on Lake Ontario, the entire frontier is rich in tragic, historic associations, the distance being practically a continuous battlefield, the scene of bloody conflicts, massacres, and slaughters. Lord Aberdeen said his most delightful experience in America was a trip along the Niagara Frontier from Buffalo to Youngstown, inspecting the battlefields of Fort



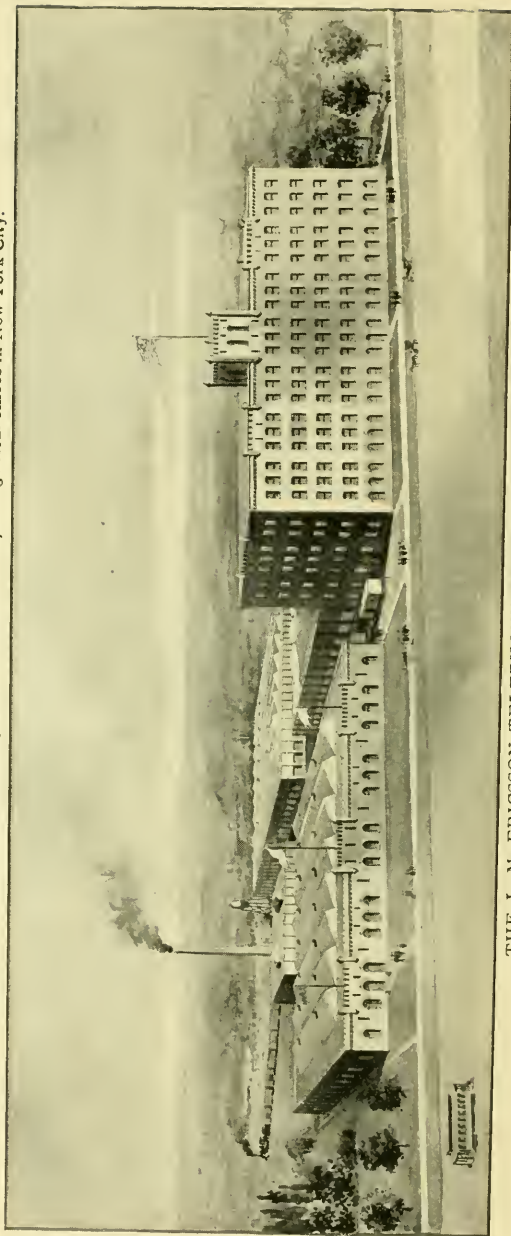
AUSTIN MILL OF
THE GOODYEAR
LUMBER CO.
Head Office, Buffalo.



STEAMER "EASTERN STATES," SISTER SHIP TO "WESTERN STATES."
Steamers of the D. & B. Line plying daily between Buffalo and Detroit.



UNITED STATES CAST IRON PIPE AND FOUNDRY CO. (BUFFALO PLANT).
This firm operates fourteen other plants in different cities, with general offices in New York City.



THE L. M. ERICSSON TELEPHONE MANUFACTURING COMPANY.
Manufacturers of Telephones, Switch Boards, and all Electrical Equipments.

Erie, Buffalo, Black Rock, Lundy's Lane, Chippawa, and Queenstown Heights.

With this romantic environment it is easy to understand why Buffalo is such a popular convention and sight-seeing city.



BUILDING OF THE BUFFALO NEWS.

Devoted exclusively to publishing the Buffalo Evening and Sunday News.

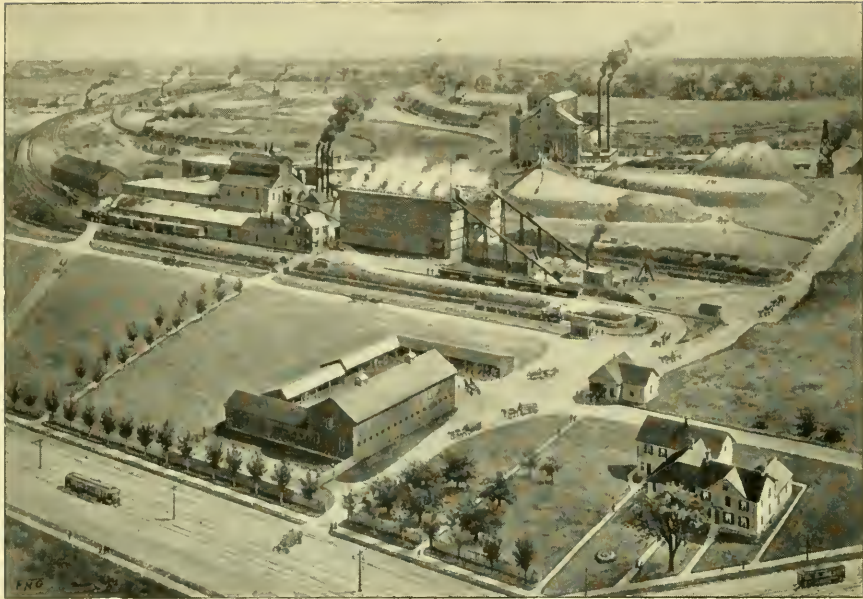


**DENTON, COTTIER & DANIELS
BUILDING.**

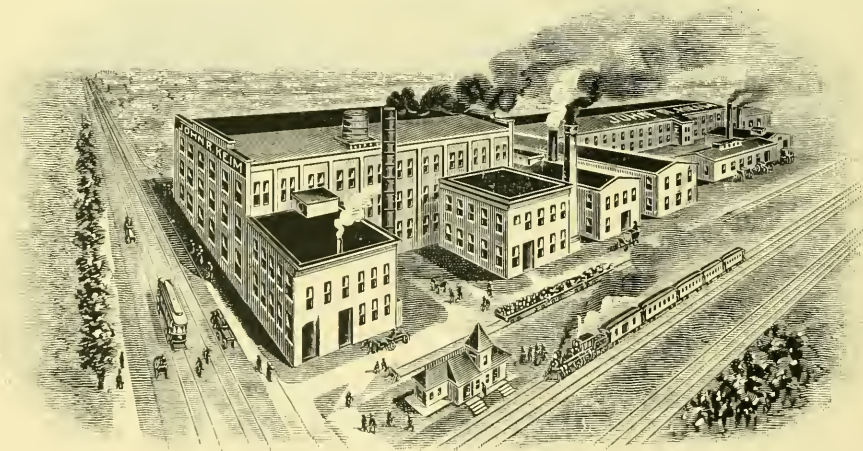
Oldest Music House in America.
(Established 1827.)

INTERNATIONAL RAILWAY COMPANY.

One of the delightful features of life and business in Buffalo is the splendid urban and interurban service provided by the trolley lines of the International Railway Company. It is regarded as one of the best-equipped systems in the country, with 350 miles of trackage in Buffalo and along the Niagara Frontier. The cars are not only operated but are also heated and



WORKS OF THE BUFFALO CEMENT CO., LTD.
Cement Manufacturers and Producers of Crushed and Building Stone.



THE JOHN R. KIEM MILLS.
Pressed Steel Products.

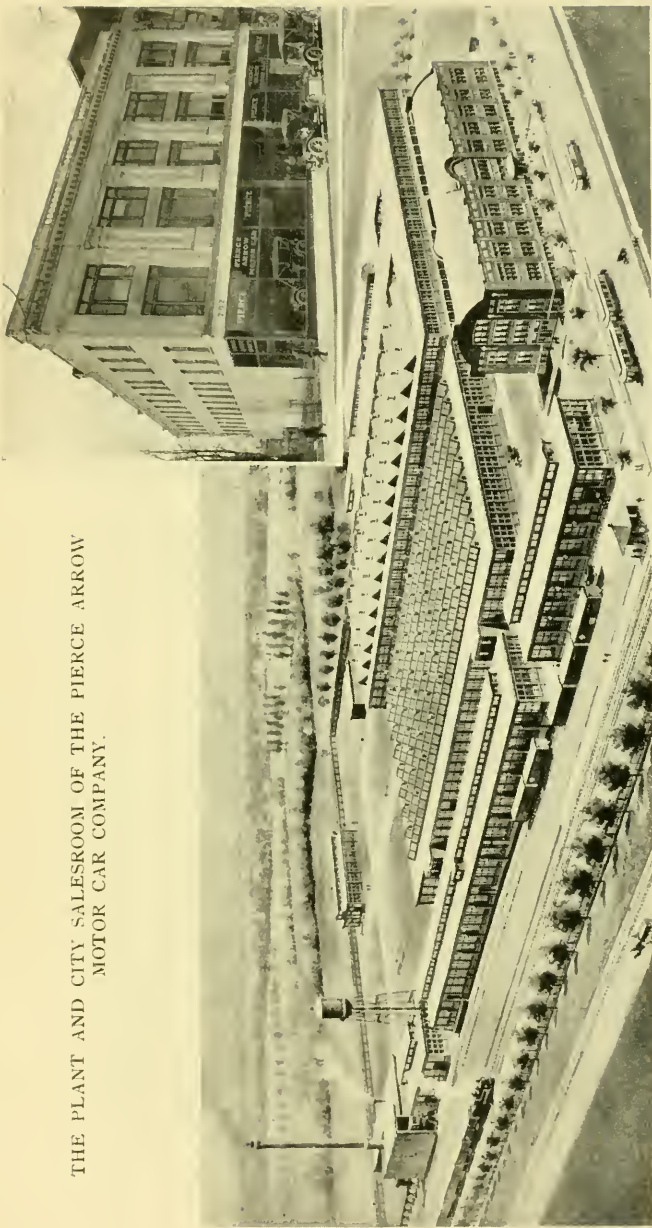


EMPIRE STATE EXPRESS, NEW YORK CENTRAL LINES.
Daily Between Buffalo and New York.



THE L. & I. J. WHITE COMPANY. (Established 1837.)
Manufacturers of Edge Tools and Machine Knives. Buffalo, New York, and Chicago.

THE PLANT AND CITY SALESROOM OF THE PIERCE ARROW
MOTOR CAR COMPANY.

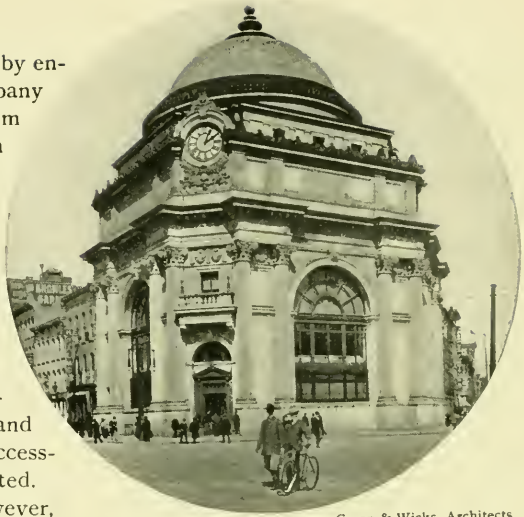


WORKS OF THE BUFFALO GAS COMPANY.

illuminated by electricity, all furnished by energy from the great cataract. The company operates a complete interchangeable system of transfers which renders every section of the city accessible for the payment of one five-cent fare.

Originally this magnificent trolley system was a number of separate small lines. Three of them were in the city and others were operated through adjacent country. When all were merged into one great organization the resultant advantages were inevitable. The residence sections not only were enlarged and enhanced in value but were made more accessible and attractive than any had anticipated.

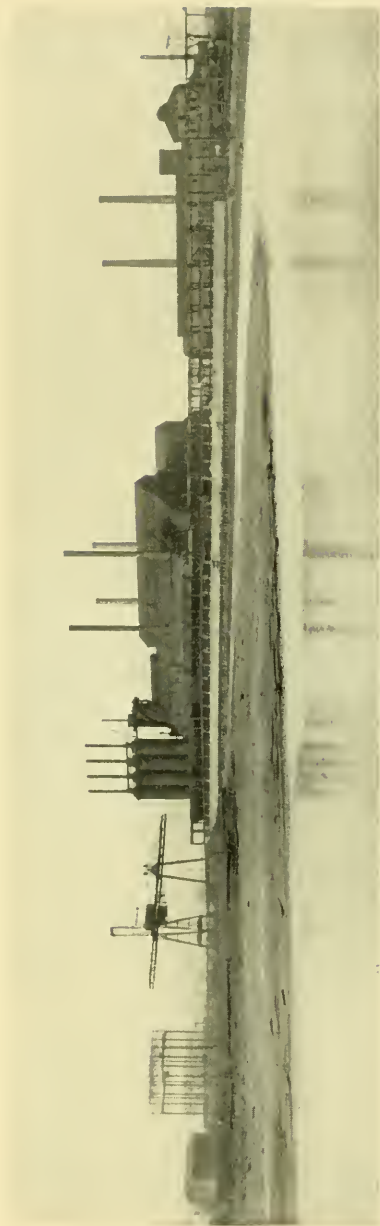
One of the greatest benefits, however, came from the opening up of industrial sites



Green & Wicks, Architects
THE BUFFALO SAVINGS BANK.



BUFFALO PLANT, WASHBURN-CROSBY COMPANY.
Manufacturers Gold Medal Flour.



PLANT OF THE NEW YORK STATE STEEL COMPANY.
Manufacturers of Pig Iron, Billets, Blooms, and Slabs.



WORKS OF THE BUFFALO CO-OPERATIVE STOVE COMPANY.
Manufacturers of Stoves, Ranges, and Fine Jobbing Castings.



WORKS OF THE BUFFALO FORGE COMPANY.

Engine and Pump Builders, Fan System of Heating, Ventilating, and Drying, Mechanical Draft Forges, Blowers, and Fans for all purposes.

through the perfecting of this great trolley system. Buffalo enjoys the unique distinction of having all its industries, on every side, within ready reach of the heart of the city.



SCENE AT DELAWARE PARK, SHOWING CASINO.

Owing to Buffalo's rapid growth the central residential districts have become greatly congested, requiring the necessity of residing in the outlying districts. The provisions made for this requirement are so inviting that the ground is now nearly covered with beautiful residences and luxurious homes, and when one considers that they are free from noise, have good, pure air, besides the additional attraction of a certain, steady increase in the valuation of their properties, why would they live elsewhere?

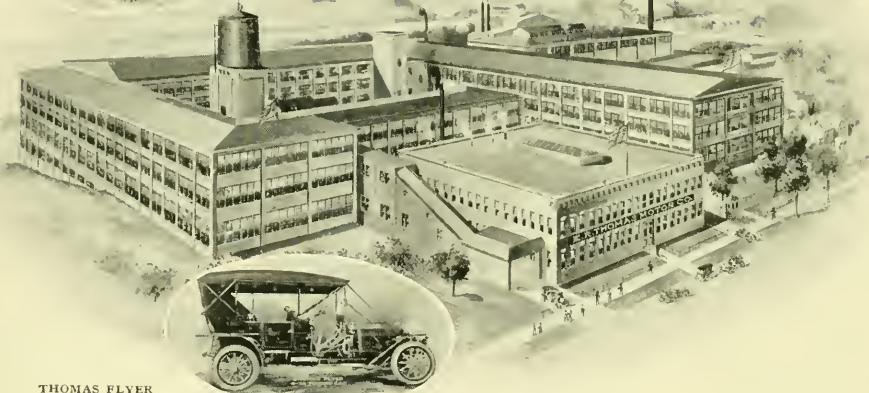
Among the many beautiful outlying districts and suburbs of Buffalo whose growth has been decidedly rapid may



THE SIDWAY FIREPROOF BUILDING.
Main and Goodell streets.



SCENE AT DELAWARE PARK.



THOMAS FLYER

WORKS OF THE E. R. THOMAS MOTOR COMPANY.

Manufacturers of the famous Thomas Flyer Automobile.



PRUDENTIAL BUILDING.

be mentioned Central Park, North Park, and Kenmore. The suburban growths of New York and Chicago have demonstrated what these districts are destined to be in all rapidly growing large cities. This great growth makes Greater Buffalo

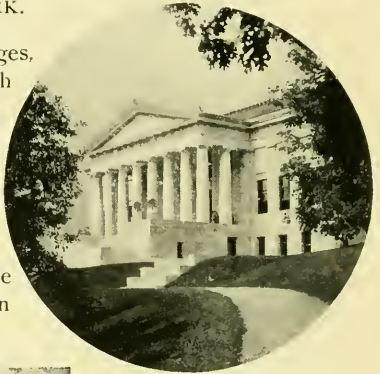


SCENE AT THE FRONT, SHOWING WATER WORKS AND NIAGARA RIVER.



THE HORTICULTURAL BUILDING AT SOUTH PARK.

which includes a splendid group of busy towns and villages, with thickly populated intermediate sections and with such manufacturing and sight-seeing centers as Niagara Falls, an integral part of the enterprising life of the Frontier which rapidly is becoming one great city with manufactories extending for miles. A glance at the map of the Niagara Frontier will reveal at once this great growth and the matchless opportunities for the splendid greater growth that is destined to make Buffalo one of the foremost industrial centers, not only of the American continent but of the whole world.



George Cary, Architect.

THE HISTORICAL BUILDING.

BUFFALO AS A CENTER OF TREMENDOUS POPULATION.



74TH REGIMENT ARMORY.

Already Buffalo is the center of the greatest circle of population that can be drawn on this continent. A map of remarkable interest shows this clearly. A night's ride from Buffalo and one is in New York or Boston or Philadelphia



MASTEN PARK HIGH SCHOOL.

center, for the steam railroads not only have put on more trains but in every instance they have shortened the running time. Chicago, like New York, is much nearer Buffalo than it used to be. The shortening of running time has meant the annihilation of space and the consequent lessening of distance. The improvement of rapid transit is making of all this country surrounding Buffalo a big contiguous city.

Inevitably, therefore, Buffalo is a Mecca for visitors. Its trolley

or Baltimore or Washington or Pittsburg or Detroit or Montreal, with Chicago little farther away, and with cities like Cleveland, Toronto, Rochester, and Syracuse only a few hours' ride. During the famed Pan-American Exposition, even expert railroad men were astonished over the resources of this circle which may be drawn by including simply the territory within a day's ride of Buffalo. Of late this circle has been brought into still closer contact with its



Eisenwein & Johnson, Architects.

LAFAYETTE HIGH SCHOOL.

system has become famed among tourists and with travelers in general. They go to and from the Falls just as from one end of a big city to another. They ride to Lockport, to beautiful Olcott Beach, or to quaint old Youngstown, through the fruit and orchard country or along the lakes or river, enjoying every mile of the journeys. The one great trolley system makes it all easy, simple, and convenient.



THE 65TH REGIMENT ARMORY.



GEORGE URBAN MILLING COMPANY'S MILL.
Manufacturers of Liberty Flour.



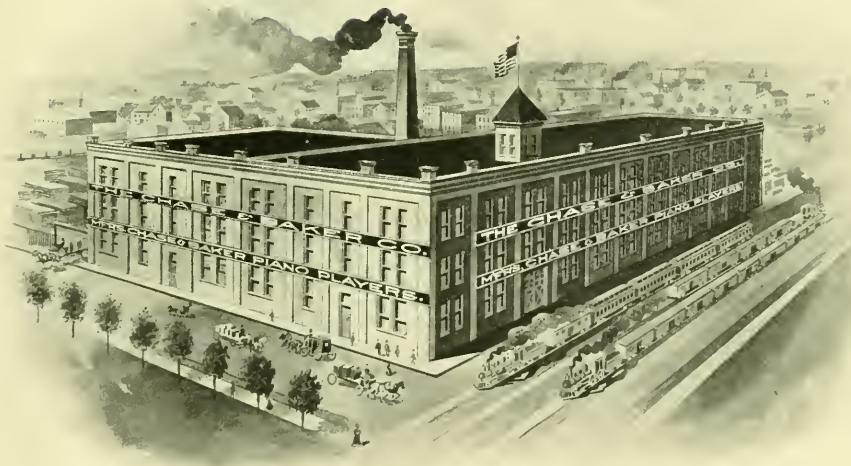
BEALS & COMPANY.
Iron, Steel, and Hardware. Stores and Warehouses, 40 to 62 Terrace.

ONE OF BUFFALO'S
UNIQUE ADVAN-
TAGES.

Buffalo also is a city unique in regard to the number of its inhabitants who, in addition to their interests in Buffalo, have business activities in other parts of the country. The reason for this is obvious. No other city can compete with it as a strategical center from which a man of varied interests can keep in close touch and easy reach of all of them. When necessary, he can go quickly and without delay to the city where



ARCHED BRIDGE, DELAWARE PARK.



PLANT OF THE CHASE & BAKER COMPANY.
Manufacturers of Piano Players and Perforated Music Rolls.

his presence is required. Thus Buffalo offers not only exceptional manufacturing facilities but absolutely unsurpassed advantages as a place of



WALBRIDGE & CO.
392-394 Main Street and
203-205 Pearl Street.
Hardware.

have interests, vast interests, in Pennsylvania, in Illinois, in New England, in Canada, even in Colorado and in Mississippi. They have their frequent engagements in large cities, East and West, North and South, but their homes are in Buffalo. Here they live. It is the ideal city for their residence.



CONVENTION HALL.

business, residence, and commercial headquarters. In these times of keen business activity every man appreciates what this means. And so it is that men whose homes are in Buffalo



Esenwein and Johnson, Architects.
WAREHOUSE OF WEED & CO.



Y. M. C. A. BUILDING.

Green & Wicks, Architects.

A FEW FIGURES ABOUT BUFFALO.

Population, 400,000; Public Schools, 71; Customs Receipts, \$638,000; Value of Exports, \$24,366,000; Postoffice Receipts, \$1,129,600; Flour Receipts, 6,269,000 barrels; Lumber Receipts, 202,950,000 feet; Grain Receipts, 100,062,000 bushels; State Law Library, 17,000 volumes; Coal Receipts by Rail, 9,600,000 tons; Ore and Pig Iron Receipts, 2,331,000 tons; Shin-

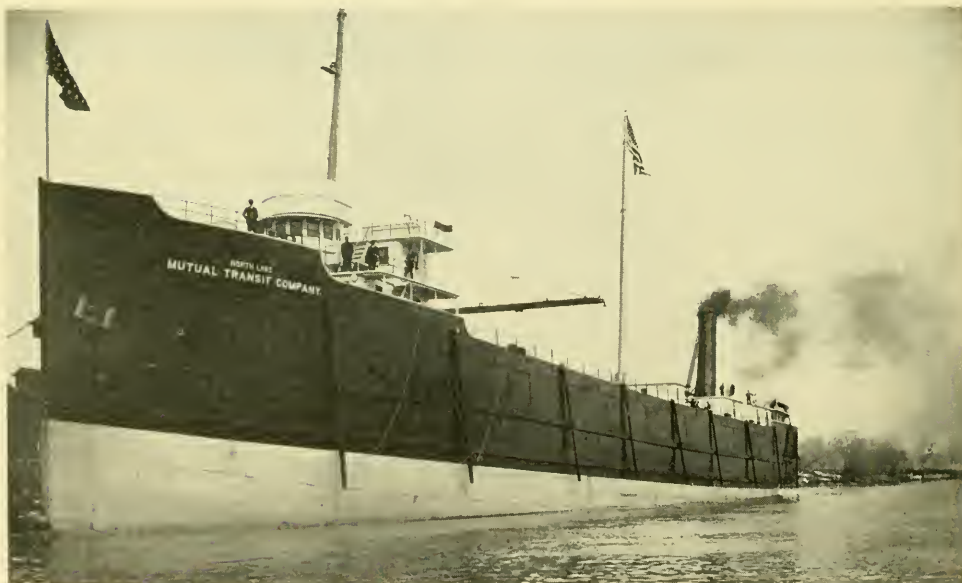
gle Receipts, 121,278,000 packages; Flour Manufactured, 2,105,840 barrels; Vessels Arrived, 3,644—tonnage, 4,858,000; Vessels Cleared, 3,711—tonnage, 4,862,000; Coal Shipments by Lake, 2,887,000 tons; Internal Revenue Receipts, \$1,087,852.85; Elevators, 30, with 24,740,000 bushels capacity; Police Department, number of men, 785—stations, 13; Greatest Coal Pocket in the World—the Lackawanna, 5,000 feet long; Public Libraries—Buffalo Library, 212,000 books and 19,000 pamphlets; Grosvenor, 70,000 volumes and 5,000 pamphlets (reference); Theaters, 8; Ellicott Square—largest and finest fireproof office building in the world, containing 400,000 square feet of floor space or over nine acres, with 16 elevators; Fire Department—579 men, 28 engine companies, 9 truck companies, 6 chemical companies, and 3 fireboats, water tower, with finest modern system of storage and signal boxes; Stockyards—second largest in the world, covering 100 acres,



THE WHITE BUILDING.



PLANT OF WICKWIRE STEEL CO.
Manufacturers of Pig Iron.

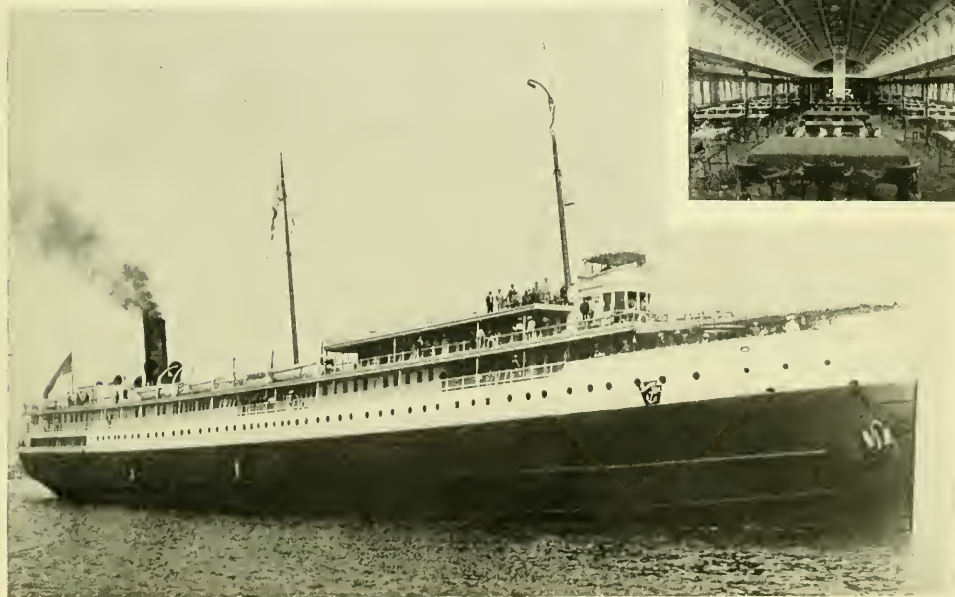


MUTUAL TRANSIT COMPANY.

Package Freight Line, operating on the Great Lakes with fleet of twelve large steel steamers.
General Offices: Chamber of Commerce Building, Buffalo, N. Y.



WORKS OF THE CUTLER DESK COMPANY.
Manufacturers of the Famous Cutler Desks and Office Furniture.



STEAMER "JUNIATA," SISTER SHIP TO THE "TIONESTA."
The Erie & Western Transportation Co.—Anchor Line Passenger Steamers plying between
Buffalo and Duluth, calling at intermediate points.



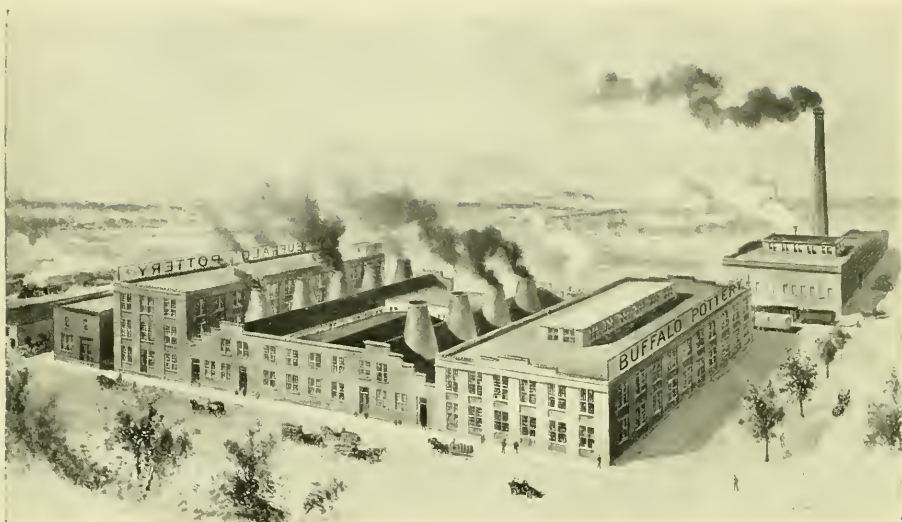
CORNER DELAWARE AVENUE AND NORTH STREET.

largest sheep shed in the world—daily capacity, 50,000 sheep, 35,000 hogs, 15,000 cattle—annual business exceeds \$101,000,000; University of Buffalo—59 years old, 4 professional departments, 4 liberal arts lectureships, 1 New York State cancer laboratory, 3,000 alumni, 160 professors and instructors, 700 students in current year; Paved Streets—greater proportion and better than any other city in the world—100 miles stone, 5 miles macadam,



Green & Wicks, Architects.

DELAWARE PARK BRIDGE.



BUFFALO POTTERY.
Manufacturers of the highest grade of Semi-porcelain



THE HUSTED MILLING CO.
Shippers of Mixed Cars of Grain and Feed.



THE BUFFALO FERTILIZER COMPANY.
Capacity, 60,000 Tons.

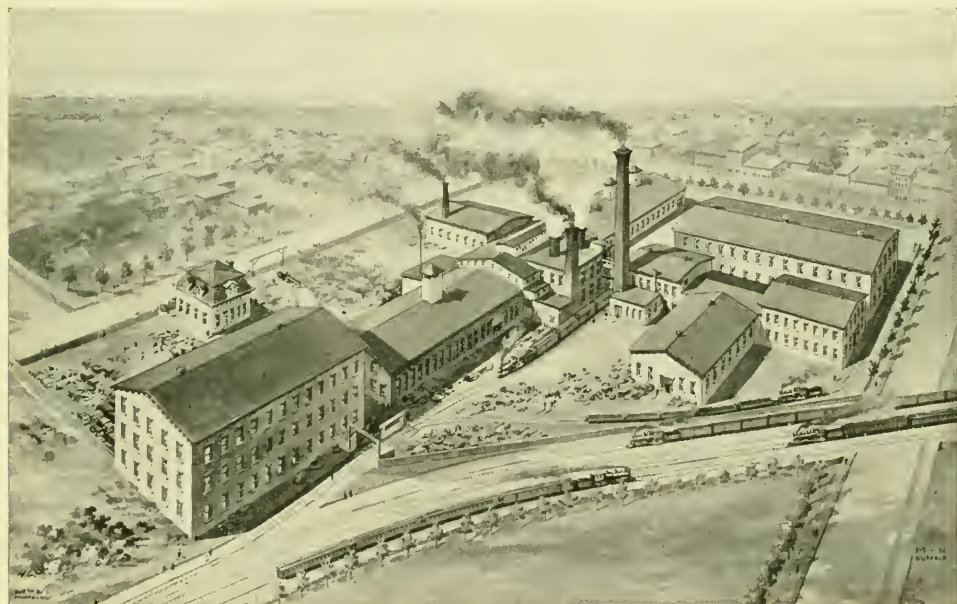


PLANT OF LAUTZ BROS. & CO.
Soap Works.



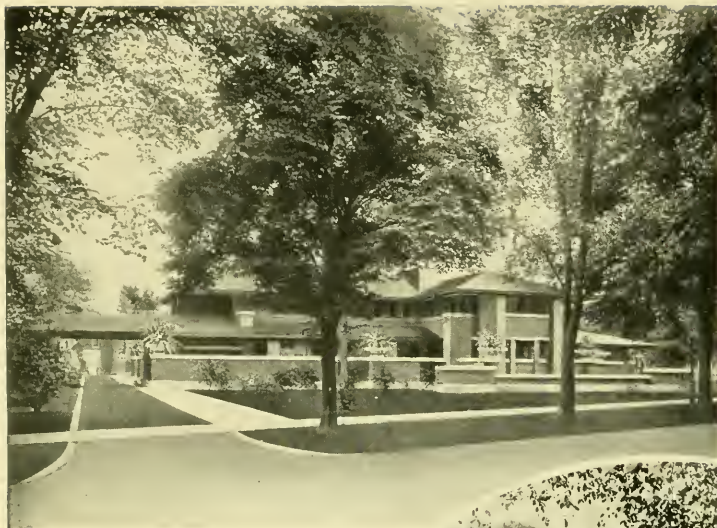
PLANT OF FARRAR & TREFTS.

Manufacturers of Boilers, Tanks, Steam and Gas Engines, Propeller Wheels, Brass Castings, and Machine Work.



EAST BUFFALO IRON WORKS. FARRAR & TREFTS, PROPRIETORS.

Manufacturers of Castings of every description. Capacity, 100 tons per day.



RESIDENCE, DARWIN D. MARTIN.

36,914 geological and mineralogical specimens, 27,014 zoölogical, botanical, etc.; Science Library, 500 volumes; Banks—10 of discount, 3 trust companies and 3 savings banks; Banks of deposit, \$50,622,166, discount, capital and



Green & Wicks, Architects.

RESIDENCE, GEO. V. FORMAN.

surplus, \$7,140,000; Trust Companies, capital and surplus, \$2,207,226—deposits, \$13,810,705; Savings Banks, surplus, \$5,898,506—deposits, \$63,826,635.

The building operations in Buffalo average a permit every three hours and ten minutes. Those who note the details of the building plans comment not only on the great number of homes but on the permanency of the buildings.



Green & Wicks, Architects.

RESIDENCE, SPENCER KELLOGG.



COUNTRY.
TWENTIETH CENTURY.
SATURN.

BUFFALO.
UNIVERSITY.
YACHT.

SIX OF THE BUFFALO CLUBS.



MONTGOMERY BROS. & CO.
Retail Lumber, Box Factory, Planing Mill.



SINCLAIR, ROONEY & CO.
Manufacturers and Importers of Millinery and Straw Goods.

It is interesting to observe that although Buffalo now gets a full supply of the 140,000 horse power of electrical energy now generated at the Falls, the supply comes from only one power company. A second great power company already has its transmission lines



PORTION OF THE NEW YORK STATE HOSPITAL.



SHELTON SQUARE.

sumer. The supply will be still larger and the price even more desirable. No one knows what this means so well as the manufacturer who has his problem of power to solve. It seems well-nigh like Utopia for him to see an industry where coal is not used, where there are no engines and boilers, where all the energy that is used comes in from the Falls in never-failing supply. Smoke is no signal of industry here.

at the city limits and is connecting up with great industries along its right of way. Two more great power companies have their plans in course of development. The power from the one company finds a wellnigh instantaneous market at prices acceptable alike to company and con-



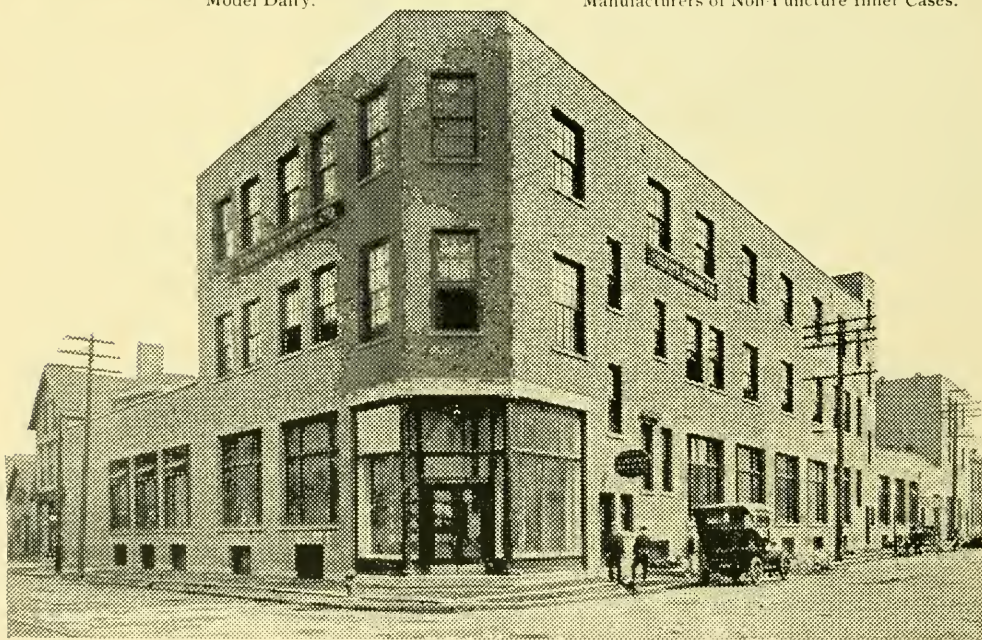
Green & Wicks, Architects.

THE ALBRIGHT ART GALLERY.



PLANT OF THE QUEEN CITY DAIRY CO.
Model Dairy.

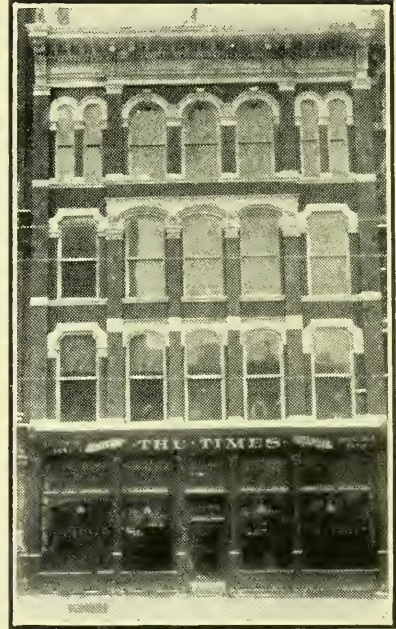
ATLAS RUBBER CO.
Manufacturers of Non-Puncture Inner Cases.



THE COLLINS BAKING COMPANY
Manufacturers of Bread, Rolls, and Cake.



Green & Wicks, Architects.
D. S. MORGAN BUILDING.



THE TIMES BUILDING.



BLACK DIAMOND EXPRESS, LEHIGH VALLEY.
Daily between Buffalo, New York, and Philadelphia



DREDGING PLANT, GREAT LAKES CONSTRUCTION CO., BUFFALO AND TONAWANDA.

Occupied on the noted 1,000-ton barge canal, which is as great an undertaking as the building of the Panama Canal.

SIGNS OF BUFFALO'S FUTURE.

All these facts are but few in comparison with the complete details of Buffalo's splendid development. Yet they serve to indicate the vast resources of the city, its many and magnificent in-



RESIDENCE, TRUMAN G. AVERY.

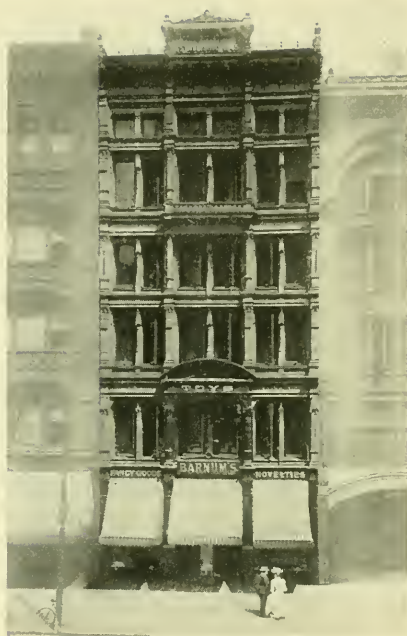


RESIDENCE, LEWIS J. BENNETT.
Central Park.

dustries, its constantly increasing array of manufacturing concerns, its ideal residence advantages, its beautiful surroundings, and attractive adjacent territory. Where one is pictured here, one hundred more might be portrayed. Out of the 3,000 and more industries in and around Buffalo, simply two or three score are shown here, and they are for the purpose of enabling the reader to judge



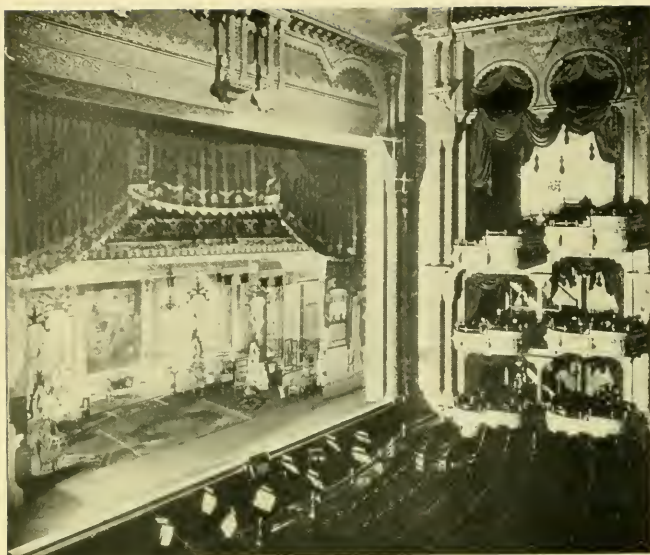
BUFFALO MILL SUPPLY CO.
General Mill Supplies and Rubber Goods.



S. O. BARNUM & SON CO.
Jobbers and Importers,
Toys, Fancy Goods, Novelties, Etc.
Established 1845.



BUFFALO & LAKE ERIE TRACTION CO.
The "Grape-Belt" Route.



INTERIOR VIEW
SHEA'S THEATER.

that in a few years from now there will be "one continuous city from Buffalo to Niagara Falls." Suburban villages have doubled in population and tripled and quadrupled in prosperity. The city itself grows steadily and swiftly. What is best of all is that this growth is of the most desirable kind.

Many of the large enterprises, with plants in various parts of the country, have regular meetings in Buffalo of officials of these plants. Thus the city is recognized and utilized as the actual center in which some of the most prominent industries on the continent assemble their representatives and make new history in the world of commerce and business.

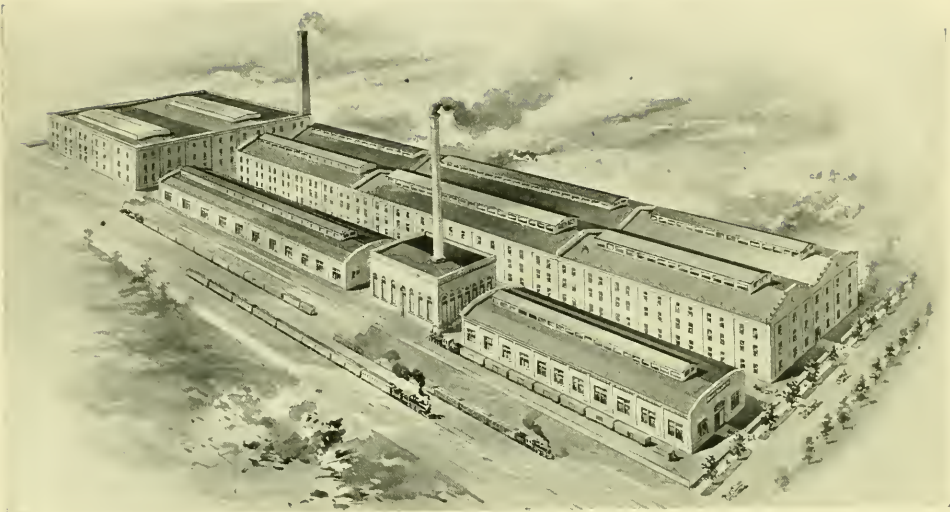
of the entire extent of the industrial life of the city.

It all serves to give a clear idea of Buffalo as it is to-day. No prophetic imagination is required to see now what Buffalo will be a decade from to-day. Every year sees new factories, new industries, new enterprises coming into existence. You pass a bit of open field in a suburb to-day and next month you find a building of splendid proportions rising on it. Many a visitor remarks

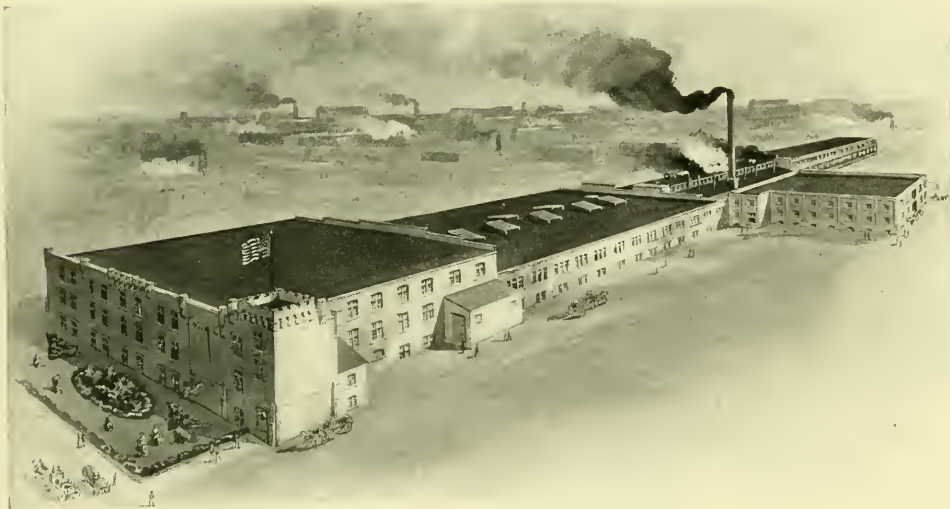


SHEA'S THEATER.

One of the largest and most perfectly constructed theaters in the world.



WORKS OF HEWITT RUBBER COMPANY.
Manufacturers of Mechanical Rubber Goods for Railroads.



BUFFALO PLANT, THE MCKINNON DASH CO.
Manufacturers of Carriage and Automobile Dashes and Fenders. Also plants at St. Catharines, Ont.,
Troy, and Cincinnati, O.



NORTH STREET.

Looking West from Delaware — Lenox Hotel in distance.

CONCLUSION.

The result of the attempt made to illustrate the industries of Buffalo in this book is necessarily incomplete, only a few of the more important enterprises being pictured. To give a faithful pictorial representation of industrial Buffalo would require a book too bulky for circulation and too ponderous for convenient handling. Yet it is the earnest desire that every one should know in fullest detail of the myriad advantages, great attractions, and rich resources of this city and its surroundings. Every inquiry will be regarded by the city's commercial interests as a favor and will receive prompt attention. For any further information address Secretary Chamber of Commerce, Buffalo, N. Y.



THE BRYANT & STRATTON COLLEGE BUILDING.

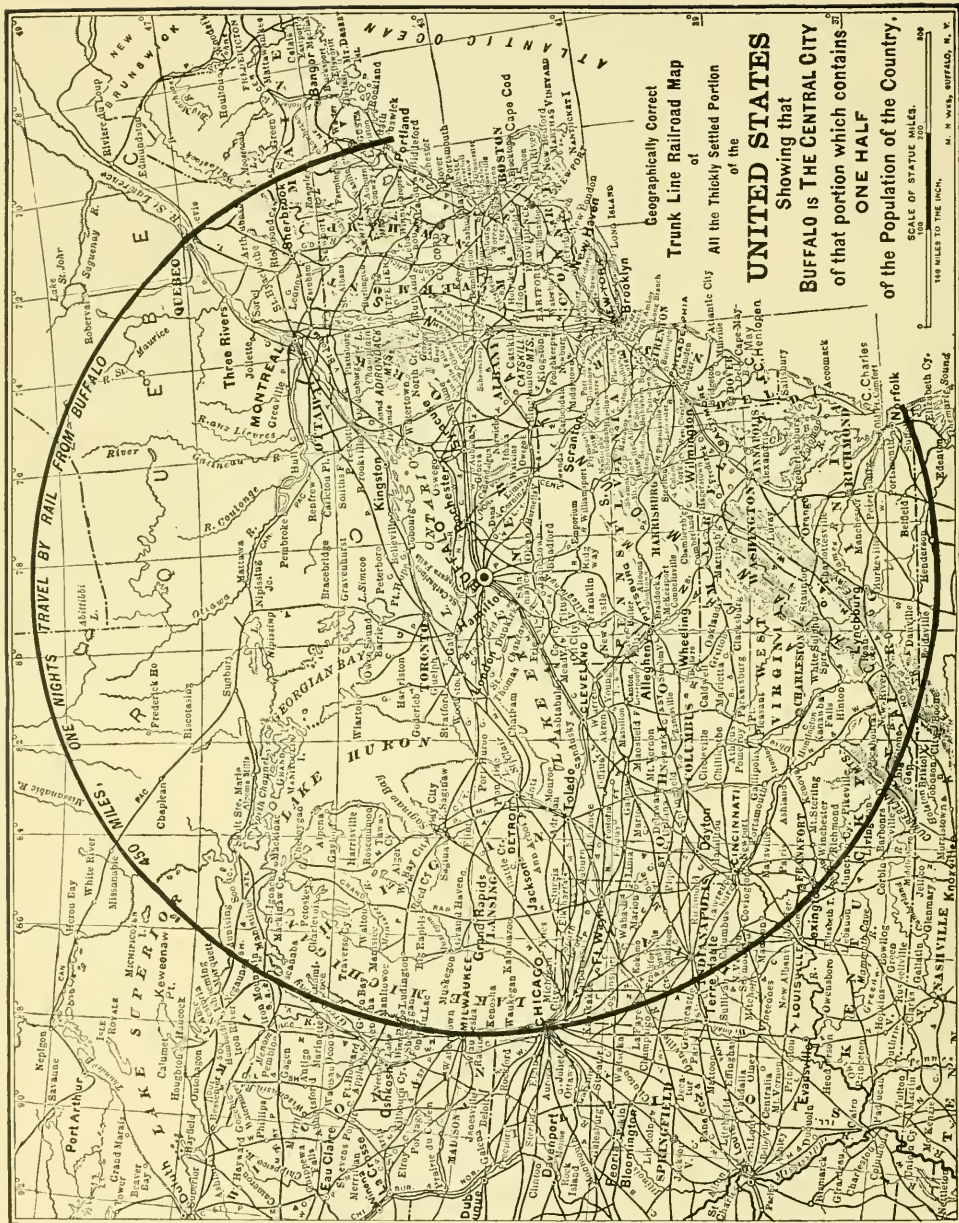
Business and Shorthand School.
Established 1854.



PLANT OF THE BUFFALO GASOLINE MOTOR COMPANY.
Manufacturers of Marine Engines.



THE
MATTHEWS BUILDING,
Home of the famed
J. N. Matthews Company,
Owners of
The Matthews-Northrup Works,
The Complete Press,
and the
Buffalo Morning Express.



“BUFFALO MEANS BUSINESS”

	1900	1908	Per cent. Increase
Population,	352,387	415,532	17.9
Lake Commerce, Net Reg. Tons,	10,701,222	12,052,481	12.6
Canal Commerce,	888,000	1,621,527	82.6
Savings Bank Deposits,	\$ 48,835,000	\$ 76,669,975	57.
Bank and Trust Co. Deposits,	\$ 51,781,167	\$ 83,407,536	61.1
Bank Clearings,	\$259,579,850	\$409,086,489	57.6
Employees M'fg Establishments,	34,275	43,567	27.1
		Census 1905	
Value of Products M'fg Establishments, .	\$105,627,182	\$147,377,873	39.5
		Census 1905	
Capital M'fg,	\$ 95,739,635	\$137,023,114	43.1
		Census 1905	
Production Pig Iron (Gross Tons), . . .	370,000	874,983	136.5
Production of Flour (Barrels),	521,819	2,567,232	392.

“WATCH US GROW!”

<http://stores.ebay.com/Ancestry-Found>



<http://stores.ebay.com/Ancestry-Found>



Thank you for your order !

This media compilation, our respective advertisements and marketing materials are protected under U.S. Copyright law. The Federal Digital Millennium Copyright Act and various International Copyright laws prohibit the unauthorized duplication and reselling of this media. Infringement of any of these written or electronic intellectual property rights can result in legal action in a U.S. court.

If you believe your disc is an unauthorized copy and not sold to you by **Rockyguana** or **Ancestry Found** please let us know by emailing at

<mailto:dclark4811@gmail.com>

It takes everyone's help to make the market a fair and safe place to buy and sell.